

# ONE-CARE<sup>®</sup>

## SAFETY LANCETS



*Blood micro-sampling has never been easier...*

### Safety

Safety cap protects the needle and assures sterility

### Ergonomic

Ergonomic body for comfortable grip

### Comfort

Dual spring safety activation mechanism for enhanced patient comfort

## SAFE

- All needles are ETO-sterilized and protected with a sterility tab
- Fully enclosed housing ensures that needle is hidden before and after use
- Single-use mechanism prevents sharps injuries and reuse of the device

## SIMPLE

- Silicone-coated, ultra-thin needles ideally positioned during skin penetration with double-spring mechanism to reduce vibrations
- Color-coded product versions to meet specific blood sample requirements and address a variety of patient skin types
- Ergonomic design for comfortable grip and secure blood collection

## CONVENIENT

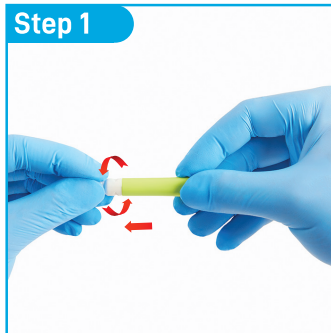
- Easy to use, intuitive operation in 3 steps only, no pre-loading required
- Wide safety cap designed for easy removal - simply twist off the cap and pull it out
- Optimal skin contact area for precise positioning on the desired test site and adequate blood flow



**Wide cap for easy twist off**

## INSTRUCTIONS FOR USE

- Intuitive design with only 3 simple steps.  
Blood micro-sampling has never been easier...



**Step 1**  
**Twist Off and Pull Out**  
the protective cap



**Step 2**  
**Press** against test site to  
activate the device



**Step 3**  
**Collect** blood sample and  
**Discard** the device  
into sharps container

## TEST SITE PREPARATION AND SELECTION

### Test Sites

Prick the side of the  
finger, not the pad



- Patient should wash hands with warm water and soap before blood collection
- Test site should be disinfected with alcohol swab
- Blood collection should be performed on the sides of the fingertip, not the pads
- Index, middle and ring fingers are recommended
- Apply intermittent pressure on the finger below test site to enhance blood flow if needed

## PRODUCT SELECTION CHART

Available in six color-coded versions to meet different test blood flow requirements and address a variety of patient skin types.

REF.	VERSION	DIAMETER (G) / DEPTH (mm/in)		
1101	Micro Flow	30G / 1.5 mm		
1102	Mini Flow	28G / 1.8 mm		
1103	Low Flow	26G / 1.8 mm		
1104	Normal Flow	23G / 2.2 mm		
1105	High Flow	21G / 2.2 mm		
1106	Max Flow	18G / 2.2 mm		