

ONE-CARE[®]

SAFETY LANCETS



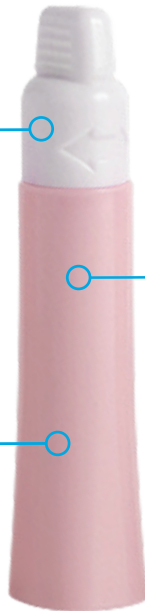
Blood micro-sampling has never been easier...

Safety

Safety cap protects the needle and assures sterility

Ergonomic

Ergonomic body for comfortable grip



Comfort

Dual spring safety activation mechanism for enhanced patient comfort

SAFE

- All needles are ETO-sterilized and protected with a sterility tab
- Fully enclosed housing ensures that needle is hidden before and after use
- Single-use mechanism prevents sharps injuries and reuse of the device

SIMPLE

- Silicone-coated, ultra-thin needles ideally positioned during skin penetration with double-spring mechanism to reduce vibrations
- Color-coded product versions to meet specific blood sample requirements and address a variety of patient skin types
- Ergonomic design for comfortable grip and secure blood collection

CONVENIENT

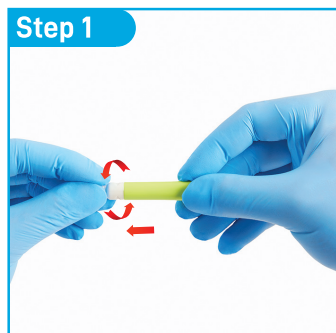
- Easy to use, intuitive operation in 3 steps only, no pre-loading required
- Wide safety cap designed for easy removal - simply twist off the cap and pull it out
- Optimal skin contact area for precise positioning on the desired test site and adequate blood flow



Wide cap for easy twist off

INSTRUCTIONS FOR USE

- Intuitive design with only 3 simple steps.
Blood micro-sampling has never been easier...



Step 1
Twist Off and Pull Out
the protective cap



Step 2
Press against test site to
activate the device



Step 3
Collect blood sample and
Discard the device
into sharps container

TEST SITE PREPARATION AND SELECTION

Test Sites

Prick the side of the
finger, not the pad



- Patient should wash hands with warm water and soap before blood collection
- Test site should be disinfected with alcohol swab
- Blood collection should be performed on the sides of the fingertip, not the pads
- Index, middle and ring fingers are recommended
- Apply intermittent pressure on the finger below test site to enhance blood flow if needed

PRODUCT SELECTION CHART

Available in six color-coded versions to meet different test blood flow requirements and address a variety of patient skin types.

REF.	VERSION	DIAMETER (G) / DEPTH (mm/in)		
1101	Micro Flow	30G / 1.5 mm		
1102	Mini Flow	28G / 1.8 mm		
1103	Low Flow	26G / 1.8 mm		
1104	Normal Flow	23G / 2.2 mm		
1105	High Flow	21G / 2.2 mm		
1106	Max Flow	18G / 2.2 mm		

Contact Us

Link Medical Products Inc. – Corporate Office
15979 North 76th Street, Unit D, Scottsdale, AZ 85260 USA

Email: info@linksmed.com

Phone: 888.425.1149 or 949.753.0001 | Fax: 949.753.7412